

PACIFIC ROSE SOCIETY PRESENTS

A Day of Wine and Roses



PACIFIC ROSE SOCIETY
OFFICERS AND BOARD OF DIRECTORS

FRAN KAELE	PRESIDENT
APRILLE CURTIS	VICE-PRESIDENT
RED COLLARD/NORM NELSON	2ND VICE-PRESIDENT
BARTJE MILLER	3RD VICE-PRESIDENT
CAROLE COLLARD	TREASURER
JO KIKKERT	SECRETARY
LEAH GREENWOOD	IMMEDIATE PAST PRESIDENT

ELIZABETH GREENWOOD	MEMBER OF THE BOARD
JANET RAYMOND	MEMBER OF THE BOARD
NANCY SIMPSON	MEMBER OF THE BOARD
CHRIS GREENWOOD	MEMBER OF THE BOARD
MICHAEL HAMUD	MEMBER OF THE BOARD
GRACE SEWARD	MEMBER OF THE BOARD
EVELYN REED	MEMBER OF THE BOARD
ANNA HAMUD	MEMBER OF THE BOARD
DON LORENZINI	MEMBER OF THE BOARD

STANDING COMMITTEES

BARTJE MILLER	WRIGLEY GARDEN
CHRIS GREENWOOD	AUCTION
BARTJE MILLER	PROGRAMS
JANET RAYMOND	PUBLICITY
EVELYN REED	MEMBERSHIP
JO KIKKERT	HOSPITALITY
JANET RAYMOND	HOSPITALITY
PAUL JACKSON	BYLAWS
GRACE SEWARD	CO-EDITOR
CHRIS GREENWOOD	CO-EDITOR
PAUL JACKSON	PUBLISHER
DON LORENZINI	SUNSHINE
CHRIS GREENWOOD	PARLIAMENTARIAN

PACIFIC ROSE SOCIETY

ROSE SHOW COMMITTEE

APRILLE CURTIS	CHAIRMAN
DON LORENZINI	CLERKS
EVELYN REED	MEMBERSHIP
BARTJE MILLER	CONSULTING ROSARIAN
PAUL JACKSON	EXHIBITORS' REGISTRATION
CAROLE COLLARD	FINANCE
APRILLE CURTIS	GRAPHICS
LEAH GREENWOOD	JUDGE'S BREAKFAST
RED COLLARD	EXHIBITORS' REFRESHMENTS
JOE KIKKERT	JUDGE'S LUNCHEON
NORMAN NELSON	PLACEMENT
PAUL JACKSON/MICHAEL HAMUD	PLANT SALES
PAUL JACKSON	PROGRAM PUBLICATION
CHRIS GREENWOOD	HORTICULTURAL SCHEDULES
APRILLE CURTIS	ARRANGEMENT SCHEDULES
FRAN KAELE	TROPHY PRESENTATION
CAROLE COLLARD	TROPHY RECORDS
JANENE ROSENTHAL	CALLIGRAPHY
RED & CAROLE COLLARD	TROPHY PROCUREMENT
LEAH GREENWOOD	TROPHY TABLE DISPLAY
CHRIS GREENWOOD	CHAIRMAN OF JUDGES
GRACE SEWARD	TROPHY VERIFICATION
ALL MEMBERS	SHOW SET UP/TEAR DOWN

PACIFIC ROSE SOCIETY

PAST-PRESIDENTS

'O, my Luve is like a red, red rose,
That's newly sprung in June.
O, my Luve is like the melodie,
That's sweetly played in tune.'

Robert Burns - circa 1890

We, who are following in your footsteps, salute you
for your dedication and love of the rose

FRED W. WALTERS PRESIDENT EMERITUS PAST-PRESIDENT AMERICAN ROSE SOCIETY 1937-1942

KARL W. SOMERS, 1942-43	NANETTE WALKER, 1971-73
E.F. ELMER, 1943-46	KENNETH MILLER, 1973-75
KARL W. SOMERS, 1947-49	TOM GANGANELLI, 1975-78
GILBERT BARRY, 1949-51	KENNETH MILLER, 1976-78
S.I. SNORTUM, 1951-52	IDA BOYINGTON, 1978-79
SCOTT J. THOMAS, 1953-54	GRACE SEWARD, 1979-81
DAVID B. BROWN, 1954-55	NORMAN NELSON, 1982-83
CHARLES W. BRENAHAN, 1955-57	HENRY HART, 1984-85
STEPHEN HICKS, 1957-58	ALBERT WHAANGA, 1986-87
LOUIS F. TONSOR, 1959-61	CHRIS GREENWOOD, 1988-89
ROBERT J. DICKSON, 1961-62	BARTJE MILLER, 1990-91
C.E. JONES, 1962-63	KENNETH MILLER, 1992-92
CHET GLASS, 1963-65	BILL HILLMAN, 1994-95
DEWEY ROLAND, 1965-66	STEVE JONES, 1996-98
DuWAYNE HODGE, 1966-67	GRACE SEWARD, 1998-2000
ED BOVARIE, 1967-68	BRUCE COLLARD, 2001-02
DuWAYNE HODGE, 1968-69	EVELYN REED, 2002--03
HENRY HART, 1969-71	LEAH GREENWOOD, 2004-05

PACIFIC ROSE SOCIETY HORTICULTURE DIVISION RULES

Please read carefully

1. Entries will be received from 6:00 a.m. until 10:00 a.m. Saturday, April 22, 2006 and must remain in place until Sunday, April 23, 2006 at 3:00 p.m.
2. Everyone is welcome to enter exhibits in this show as long as roses were grown in his or her own outdoor garden. One exhibitor or a team from any one garden may enter any class for which they are qualified; however, more than one entry of the same variety from the same garden in any one class will disqualify each.
3. Exhibitors must register their name and full address with the Registration Clerk.
4. Approved ARS entry tags must be used. Complete only the upper half of the tag including name and full address. Use ordinary pens, blue or black ink; stamps or name labels. **NO FELT PENS.** Close entry tags.
5. All vases will be furnished except as noted.
6. Classification of all roses will be in accordance with 'The Official List of Approved Exhibition Names', 'The Handbook for Selecting Roses', 'Modern Roses 11' as modified in ARS publications prior to the date of the show and 'The Combined Rose List'. However, where differences occur, ARS publications will take precedence.
7. Queen, King, and Princess of Show will be selected from Class 1. Miniature Queen, King and Princess of Show will be selected from Class 25. A Court of Honor of six entries will be selected from Class 1 and Class 20.
8. In challenge classes, only one entry per exhibitor.
9. Specimen judges judging this show must enter the Judges' Challenge classes only except that Horticultural Judges may enter in the Arrangement section.
10. Wedges & supports, except for plastic wrap, will be allowed.
11. Only blue or first place winners are eligible to win trophies.

12. Specimens need not be registered to be exhibited but must have an ARS approved exhibition name. Be aware of the following reasons for disqualification:
 - a. Misnamed, misclassified, unlabeled, mislabeled.
 - b. Stem on stem, except Old Garden Roses and Shrubs.
 - c. The presence of a foreign substance applied to the foliage, stem or bloom to improve the appearance of the specimen.
 - d. Sidebuds on specimens that must be disbudded.
 - e. A specimen in violation of ARS rules or local society rules applying to this show.
 - f. The appearance of the exhibitor's name in any location other than that designated on the entry tag.
 - g. A rose not listed in an ARS approved publication.
13. The decisions of the judges are final.
14. In the Judges' Class, any number of entries will be allowed, however, only one variety per person or household will be permitted.
15. The show committee will take reasonable precautions to insure the safety of exhibits and properties. Pacific Rose Society or the Los Angeles Botanical Garden cannot be held responsible for loss and damage to any property.
16. Trophies will be awarded on Saturday, April 22, 2006, at 2:00 p.m. All winners must be present for their acceptance or made specific arrangements for their acceptance.
17. Exhibitors are encouraged to periodically check the 'Return to Exhibitor' table next to the placement table. The placement committee will return all entries with noticeable discrepancies here to allow exhibitors to make the necessary corrections.

Division I

Section A

Hybrid Tea and Grandiflora Roses

Class 1. One hybrid tea or grandiflora bloom without sidebuds.

Queen of Show

Award: Trophy and ARS Gold Certificate

King of Show

Award: Trophy and ARS Silver Certificate

Princess of Show

Award: Trophy and ARS Bronze Certificate

Court of Honor

Six superior entries to be selected from Class 1.

Class 2. Three hybrid tea or grandiflora blooms without sidebuds.

One variety in one container.

Award: Trophy

Class 3. Six hybrid tea or grandiflora blooms without sidebuds.

One variety in one container.

Award: Trophy

Class 4. Twelve hybrid tea or grandiflora blooms without sidebuds. One variety in one

container. Exhibitor must provide own container.

Award: Trophy

Class 5. One fully open hybrid tea or grandiflora bloom without sidebuds. Stamens must be visible.

Award: Trophy

Class 6. One hybrid tea or grandiflora spray.

a. One hybrid tea spray. Two or more blooms.

Award: ARS Certificate

b. One grandiflora spray. Two or more blooms.

Award: ARS Certificate

Trophy will be awarded for the best in Class 6.

Class 7. One decorative hybrid tea bloom without sidebuds. This class is for varieties that **cannot** present hybrid tea exhibition form.

Award: Trophy

Section B

Floribunda and Polyantha Roses

Class 8. One floribunda bloom without sidebuds.

Award: Trophy and ARS Certificate

Class 9. One floribunda spray. Must have two or more blooms.

Award: Trophy and ARS Certificate

Class 10. Three floribunda sprays. One variety in one container.

Award: Trophy

Class 11. Six floribunda sprays. One variety shown in one container. Exhibitor must furnish his or her own container.

Award: Trophy

Class 12. One polyantha spray.

Award: Trophy and ARS Certificate

Class 13. Three polyantha sprays. Any combination of varieties.

Award: Trophy

Section C

Old Garden Roses

All entries must include date and horticultural classification on entry tags

Class 14. One species with or without sidebuds or one spray.

Award: Trophy and ARS Genesis Certificate

Class 15. One Old Garden Rose with or without sidebus or one spray. Introduced prior to 1867, including roses of unknown date which were known to have existed prior to 1867. No species.

Award: Trophy and ARS Dowager Queen Certificate

Class 16. One Old Garden Rose with or without side buds or one spray. Introduced in 1867 or after or with unknown date of origin after 1867. No species.

Award: Trophy and ARS Victorian Certificate

Class 17. Three blooms or sprays of any old garden rose. One variety in one container.

Award: Trophy

Class 18. Six blooms or sprays of any old garden rose. One or more varieties in one container.

Award: Trophy

Section D

Shrub Roses

Class 19. One bloom or spray of any modern shrub that does not have a family connection but is designated in ARS publications as (S). No Austin Roses.

Award: Trophy and ARS Certificate

Class 20. One bloom of any 'Austin' or 'English' rose.

Award: Trophy

Class 21. One spray of any 'Austin' or 'English' rose.

Award: Trophy

Class 22. One bloom or spray of any classic shrub with a family designation. i.e. Hybrid Rugosa, Hybrid Musk, Hybrid Kordesii or Hybrid Moyesii. Place the family designation on the upper right corner of the entry tag.

Award: Trophy

Section E

Climbing Roses

Class 23. One bloom of any climber with no bush counterpart.

Award: Trophy and ARS Certificate

Class 24. One spray of any climber with no bush counterpart.

Award. Trophy and ARS Certificate

Section F

Miniature Roses

Class 25. One miniature bloom without sidebuds.

Miniature Queen of Show

Award: Trophy and ARS Gold Certificate

Miniature King of Show

Award: Trophy and ARS Silver Certificate

Miniature Princess of Show

Award: Trophy and ARS Bronze Certificate

Court of Honor

Six superior entries to be selected from Class 25.

Class 26. Three miniature blooms without sidebuds. One variety in one container.

Award: Trophy

Class 27. Six miniature blooms without sidebuds. One variety in one container.

Award: Trophy

Class 28. Twelve miniature blooms without sidebuds. One variety in one container. Exhibitor to furnish container.

Award: Trophy

Class 29. One miniature spray.

No single (4-9 petals) varieties.

Award: Trophy and ARS Certificate

Class 30. Three miniature sprays. Three stems in one container.

Any combination of varieties.

Award: Trophy

Class 31. One miniature single (4-9 petals) variety without sidebuds.

Award: Trophy and ARS Certificate

Class 32. One decorative miniature bloom without sidebuds. No single (4-9 petals) varieties.

Award: Trophy

Class 33. One fully open miniature blossom without sidebuds. Stamens must be showing. No single (4-9 petals) varieties.

Award: Trophy and ARS Certificate

Class 34. One micro-miniature rose. One blossom or spray.

Award: Trophy

Section G

Mini-Flora Roses

Class 35. One Mini-Flora bloom without sidebuds.

Miniature Queen of Show

Award: Trophy and ARS Gold Certificate

Miniature King of Show

Award: ARS Silver Certificate

Miniature Princess of Show

Award: ARS Bronze Certificate

Section H

English Boxes

Class 36. Hybrid Tea or Grandiflora English Box.

a. Six blooms of one variety.

Award: Trophy

b. Six blooms of two or more varieties.

Award: Trophy

ARS Certificate awarded to the best in class.

Class 37. Floribunda English Box. Six blooms of one variety.

Award: Trophy

Class 38. Old Garden Rose English Box. Six blooms of one variety. Open date.

Award: Trophy

Class 39. Shrub English Box. Six blooms of one variety.

Award: Trophy

Class 40. Miniature English Box. Six blooms of one variety.

Award: Trophy and ARS Certificate

Section I

Single Roses

Roses that only present flowers with 4 to 9 petals

Class 41. One spray of a single hybrid tea rose.

Award: Trophy

Class 42. One spray of a miniature single rose.

Award: Trophy

Class 43. One bloom or spray of a single rose. No miniatures or hybrid tea.

Award: Trophy

Section J

Cycle of Bloom

Class 44. Three hybrid tea or grandiflora blooms without sidebuds. One bud with sepals down, one bloom at exhibition stage and one bloom fully open with the stamens showing. One variety in one container.

Award: Trophy

Class 45. Three miniature blooms without sidebuds. One bud with sepals down, one bloom at exhibition stage and one bloom fully open with the stamens showing. One variety in one container.

Award: Trophy

Section K

Miscellaneous Roses

Class 46. Modern Classic. Any modern rose introduced 1920 - 1980. One bloom or spray.

Award: Trophy

Class 47. Silver Bowls. One hybrid tea or grandiflora bloom showing exhibition form floating in a bowl without stem or foliage. Bloom must be free floating.

Award: Trophy and ARS Certificate

Class 48. Most Fragrant Rose. One bloom or spray. Judged 60% on fragrance and 40% on general excellence.

Award: Trophy

Class 49. One bloom or spray of any seedling hybridized or a sport discovered by the exhibitor. Include parent, if know, on the entry tag. No roses under test numbers are eligible.

Award: Trophy and ARS Certificate

Section L

Challenge Classes

Exhibitors may place their own entries

Class 50. Award of Excellence Challenge.

Five blooms without sidebuds of any miniature rose receiving the 'Award of Excellence'.

Award: Trophy

Class 51. Old Garden Rose Bouquet.

Nine or more blooms or sprays but not more than three of any variety. List varieties on reverse of entry card. Foliage must be present. Open date. Exhibitor to provide own container.

Award: Trophy

Class 52. Elegy. A memorial to all departed members of Pacific Rose Society. A bouquet of 6 to 10 stems of hybrid tea or grandiflora blooms without sidebuds. Varieties to be a combination of basic red and white.

Award: Trophy

Class 53. Rosarian's Challenge. One bloom of a hybrid tea or grandiflora, one bloom or spray of a floribunda, one bloom or spray of a miniature, one bloom or spray of any old garden rose, one bloom or spray of a climbing rose and one bloom or spray of a shrub. Each to be shown in six separate containers.

Award: Trophy

Class 54. Grace Seward's Challenge. Three sprays of a single rose (4-9 petals). Each a different variety displayed in one container. No miniatures.

Award: Trophy

Section M

Pacific Rose Society Challenge Classes

Open only to members of Pacific Rose Society

Class 55. Founder's Trophy and Keepsake. In honor of Fred and Agnes Walters. Six different hybrid tea blooms without sidebuds displayed in one one container

Award: Trophy

Class 56. The Kenneth Miller Memorial Trophy.
Three white hybrid teas. Any combination of varieties without sidebuds displayed in three containers.

Award: Trophy

Class 57. The Richard Kaelke Memorial Trophy.
Three blooms or sprays of the rose 'Irene Watts' aka 'Pink Grüss An Aachen'. Displayed in one container.

Award: Trophy

Section N

Novice Classes

Open only to exhibitors that have never won a trophy in an ARS-accredited show. Novice exhibitors may also enter any other class in this show

Class 58. One hybrid tea or grandiflora bloom without sidebuds.

Award: Trophy and ARS Certificate

Class 59. One miniature bloom without sidebuds.

Award: Trophy and ARS Certificate

Section O

Rose Photography

Class 60. Rose Photograph. A rose or rose-related photograph. Any 5-inch x 7-inch or 8-inch x 10-inch color or black and white print. The print is to be matted but not framed. The outside dimensions of the mat must be 11-inches x 14-inches. Stands will be provided. Class 60 will be judged by one team of horticultural judges and one team of arrangement judges. Entries will be judged 50% on exhibition form or rose bloom(s) and 50% in general overall beauty. "Exhibition form" for the purposes of this class shall include fully-open form with stamens clearly visible.

Award: Trophy

Section P

Judges' Classes

Open only to judges who are judging this show.

Class 61. One hybrid tea or grandiflora bloom without sidebuds.

Award: Trophy and ARS Certificate

Class 62. One floribunda bloom or spray or one polyantha spray.

Award: Trophy and ARS Certificate

Class 63. One miniature bloom without sidebuds.

Award: Trophy and ARS Certificate

Class 64. One bloom or spray of an old garden rose.

Award: Trophy and ARS Certificate

Class 65. One bloom or spray of any shrub rose.

Award: Trophy and ARS Certificate

ARRANGEMENT DIVISION

Rules For Arrangement Exhibitors

1. This section is open to all amateur flower arranging enthusiasts, whether advanced, novice, junior or judges who are judging the Horticultural sections.
2. The show opens at 6:00 a.m. and all arrangements must be in place and ready for judging by 10:00 a.m., Saturday, April 22, 2006 and must remain until the close of the show on Sunday, April 23, 2006 at 3:00 p.m.
3. All exhibitors must register. All arrangements must be set up and placed by the exhibitor.
4. An exhibitor will be limited to one entry per class or subclass where appropriate. Each entry must be the exhibitor's own work and must not have been displayed in another show.
5. A team may enter exhibits if each member has worked on the arrangement; otherwise, they must be entered individually. Members of the same household may enter each class or subclass as long as they individually create each arrangement.
6. All roses must be outdoor grown, of high quality and provide the dominant flower interest in all arrangements. Roses should be correctly named and listed on the entry tags. The ARS Medal Certificates will only be awarded to arranger grown entries, therefore, all entries with arranger grown roses must be identified as such by placing an 'AG' on the upper right corner of the entry tag.
7. Unless otherwise stated, stands, bases, mats, backdrops and other accessories are allowed. Bases will be considered part of the arrangement. Natural wood (dried, weathered, treated, etc.) will be considered dyed plant material unless it has been

made into an art object (i.e. statue), then it will be considered an accessory. They arrangements will be placed on long, open tables. There will be no space requirements; however, exhibitors should show restraint in respect to other exhibitors.

8. All miniature arrangements must use roses classified by ARS as miniature or mini-flora.
9. No artificial plant material or painted or dyed fresh material is allowed. No plants on the state conservation list, the American Flag or live creatures are permitted.
10. Trophies will only be awarded to the purple ribbon winner of each class and must have a score of 90 or better. ARS Medal Certificates will only be awarded to the best entries in achieve a score of 92 or greater.
11. The Pacific Rose Society will take all possible care but will not be held responsible for exhibits. We strongly encourage arrangers to place their name on all accessories in a place not noticeable to the judges. The arranger shall pick up or arrange to have their entries picked up at the end of the show.
12. Trophies will be awarded at 2:00 p.m. on Saturday, April 22, 2006. Arrangers shall be present or have made arrangements for someone to pick up their trophies. Pacific Rose Society cannot be held responsible for unclaimed trophies or arrangements.
13. The Arrangement Division shall be judged according to the rules and procedures outlined in the ARS Guideline for Judging Rose Arrangements. The decisions of the judges are final.

ARS Scorecard

Conformance --- 20 points

Design -- 30 points

Perfection of roses -- 30 points

Creativeness & Expression -- 10 points

Distinction -- 10 points

ARRANGEMENT DIVISION

Division II

Section A - ARS Royalty Award

Traditional Arrangements

Class A1. White Zinfandel

A mass, line or line-mass arrangement using all fresh plant materials

Section B - ARS Princess Award

Fresh roses with rose foliage, hips and/or roots.
No other plant material or accessories permitted.

Class B1. Merlot.

Designer's choice but must note type on entry tag.

Section C -- ARS Duchess Award

Fresh roses with dry and/or treated plant material.
No fresh plant material other than roses.

Class C1. Chardonnay.

Designer's choice but must note type on entry tag.

Section D -- ARS Oriental Award

For arrangements in the Oriental manner.

Class D1. Champagne.

An arrangement in the Oriental Manner.

Section E -- ARS Artist's Award

For modern arrangements.

Class E1. Chablis

A modern design.

Section F -- ARS Mini-Royalty Award

Traditional design using fresh miniature roses. Bases are considered part of the measurement restriction.

Class F1. Pinot Noir.

Traditional miniature design.

Class G1. Grenache.

Underwater arrangement. Designer's choice.

Section H -- ARS Miniature Artist Award

Modern Miniature Arrangements

Class H1. Chenin Blanc.

A modern design not to exceed five inches in height, width or depth.

Class H2. Rose'.

A miniature design not to exceed ten inches in height, width or depth.

Section I1 -- Judges Section

Open to all Arrangement Judges and Apprentice Judges who are judging this show.

Class I1. Cabernet Sauvignon

Standard design. Judge's choice but must note type of design on entry tag.

NOTES

Au revoir

But Not Goodbye

Pacific Rose Society lost two faithful members in 2005 and it is only fitting that we pause a moment to remember our friends that were so much an important part of Pacific Rose Society.

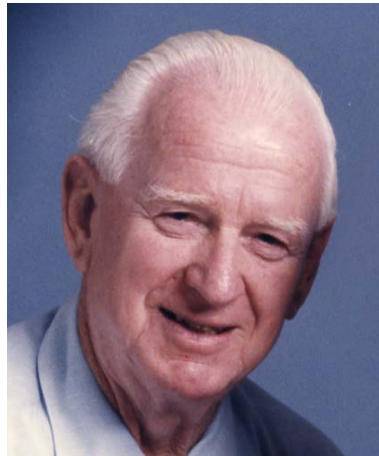


Richard Kaelke

First vice-president, accredited judge and consulting rosarian. Dick's knowledge of OGR's and Shrubs was impressive and he was always willing to share this knowledge with everyone. A void this will be hard to fill.

Frank (Papa) Moritz, Sr.

Always ready and willing to help! Setting the tables, working at our show or volunteering hours at Wrigley garden, Frank was always one of the first to say yes. His energetic enthusiasm spread to all that worked with him.

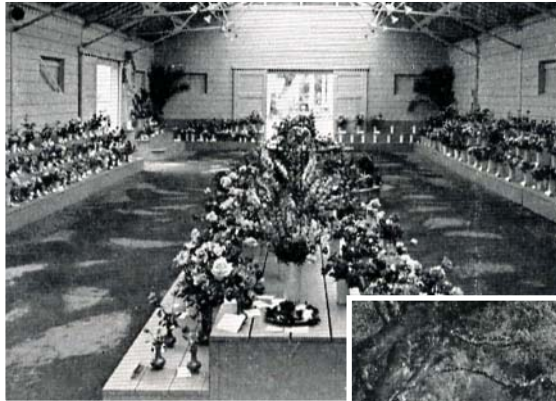


A LOOK BACK



Pacific's rose shows in the 50's and 60s were major events that include selecting a 'Pacific Rose Queen and Court'.

The presentation of major trophies was a media event. Madeline and Steve Hicks are shown here receiving a challenge trophy sponsored by the Pasadena Star News.



Thousand of blossoms and arrangements drew several thousand visitors each year.

Rose Shows were staged in a spacious and graceful setting provided by the Fanny Morrison Horticultural Center.

